



In a flurry cap

By Tracey Marsden

Crisp blue skies, snowflights, and marshmallows...your Blythe can reminisce about the wonders of Winter all year long in this adorable cap knitted in the colours of classic Wedgewood.

Materials

- 1 ball of Debbie Bliss eco baby in color 14004 (Baby Blue). The cap uses less than one 50g ball of this yarn
- 1 ball of similar weight yarn in white for snowflake embroidery and pom pom trim – I used Cleckheaton's Merino Bambino 4ply as I had it on hand.
- 1 ball of novelty fluffy or 'eyelash' yarn for trim (I used Lincraft's Entice in white – try Lion Brand Fun Fur as an alternative)
- One pair of 3mm knitting needles OR SIZE TO OBTAIN GAUGE
- One pair of 3mm double pointed knitting needles OR SIZE TO OBTAIN GAUGE
- Tapestry needle for weaving in ends
- Cardboard for pom poms (or pom pom maker)

Gauge

My gauge is 26 sts = 4" (10cm) using 3mm needles and the Debbie Bliss yarn. Use this gauge to obtain correct size. If your gauge differs, consider using smaller or larger needles or increasing or decreasing the number of stitches initially cast on.

The yarn's officially published gauge is 25 sts and 34 rows = 4" (10cm) using 3.25mm needles. Use this as a guide when using alternative yarns.

The published gauge of the Lincraft Entice fluffy yarn is 20 stitches and 20 rows = 4" (10cm) using 3.25mm needles.

Skill Level

Easy

Note

The cap is knit in one piece with a back seam. The fluffy trim is worked from stitches picked up along the cap's front edge.

INSTRUCTIONS

Body

Leaving a long tail of about 8" (20cm) cast on 20 stitches with 3mm needles.

Row 1 (and every odd row): K1, p to end

Row 2, 4, 6, 8, 10, 12: K1, m1, k to end

Row 14, 16, 18, 20: K to end

Row 22: K1, m1, k to end

Row 24: K to end

Row 26: K1, m1, k to end

Row 28: K to end

Row 30: K1, m1, k to end

Row 32, 34, 36, 38, 40, 42, 44, 46, 48, 50, 52, 54, 56, 58, 60, 62, 64, 66: K to end

Row 68: ssk, k to end

Row 70: K to end

Row 72: ssk, k to end

Row 74: K to end

Row 76: ssk, k to end

Row 78, 80, 82, 84: K to end

Row 86, 88, 90, 92, 94, 96: ssk, k to end

Row 97: K1, p to end (as per odd rows)

Bind off all stitches. Weave in only the end you just finished with (ie not the tail of yarn you created during CO – you'll need that one to sew seam).

Snowflake pattern

Using the chart and white yarn, embroider the snowflakes onto the cap in duplicate stitch. Alternatively the snowflakes can be knitted as you go.

Fluffy Trim

With WS facing, pick up stitches from the straight, long edge of your knitting (one long edge will have shaping from the increasing and decreasing we did). The k1 stitches we knitted at the start of each odd row should stand out along the edge. Pick these up with your needle. It doesn't matter how many you pick up as long as the stitches are consistently spaced apart. For my fluffy yarn I picked up all stitches as the yarns were similar weight. Start and finish as close to the edges as possible.

Row 1: K to end

Row 2: P to end

Bind off all stitches and weave in ends.

Pom Poms

With the white yarn, make two pom poms using a pom pom maker or cardboard circles with a 1.4" (3.5cm) diameter.

I-cords

With double pointed needles and the white yarn you used for the snowflakes, cast on 2 sts and knit a 10cm i-cord. Repeat to make two.

Finishing

With right sides together, fold cap in half (at red arrows on chart) and use the tail of yarn from casting on to sew the back seam. Turn right side out and your cap is ready for wearing. There shouldn't be any need to block. Attach each i-cord to a pom pom and sew i-cords to front of cap.

Copyright

This design is the copyright of Tracey Marsden and is sold for personal use only. The pattern is not to be sold or given away nor are items made using this pattern to be sold or given away. However, should you wish to discuss becoming an agent to sell ready made items using this pattern, please contact Tracey at <http://www.blythetoday.etsy.com>.

Abbreviations

BO = Bind off. Knit or purl two stitches as normal and lift the first stitch over the second. Continue in this way until all the stitches on the left hand needle have been knitted and only one stitch remains on the right hand needle. Cut thread and slip through remaining stitch.

CO = Cast on

K = Knit

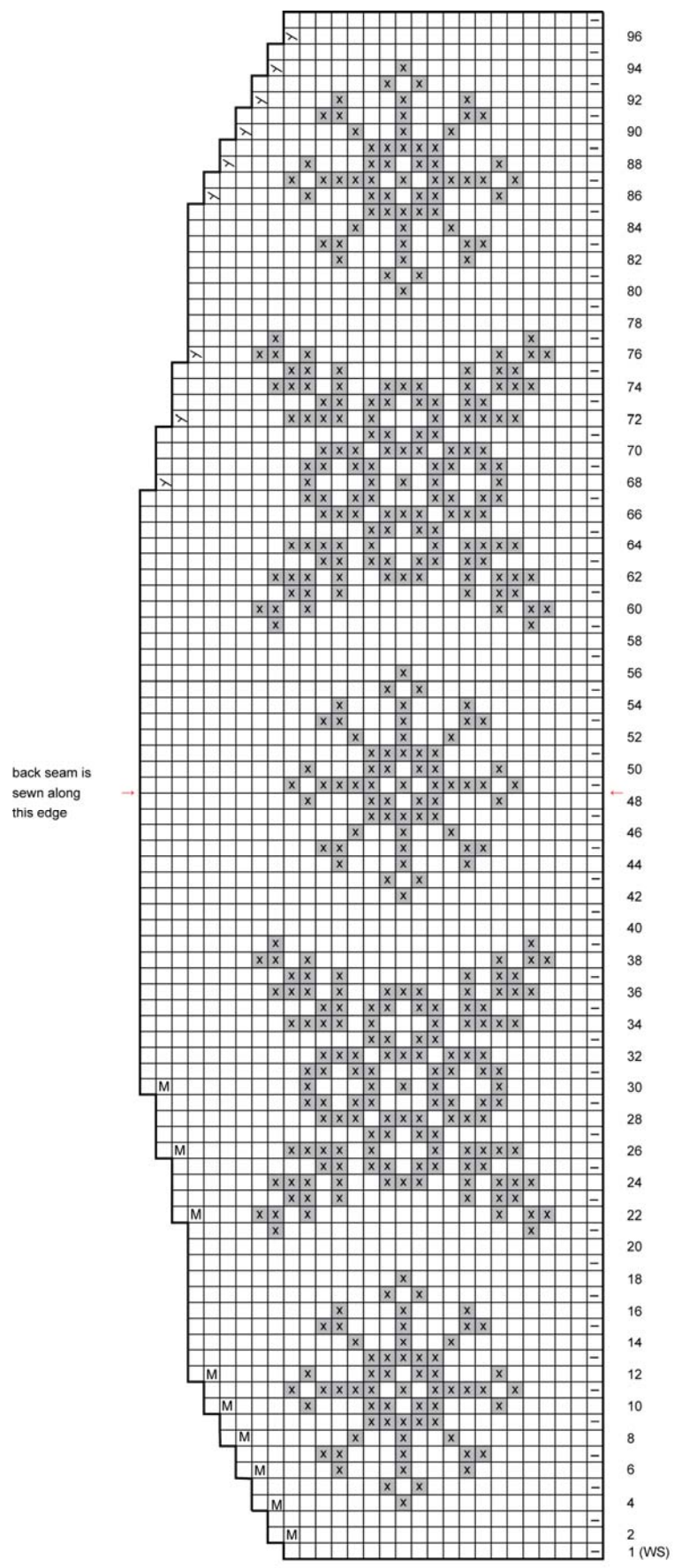
P = Purl

M1 = Make one stitch. With the needle tip, pick up a strand of yarn from the work inbetween the left and right hand needles and knit or purl it, depending on row.

Ssk = Slip, slip, knit. Slip next two stitches knitwise, one at a time, to right hand needle. Insert left hand needle into these two stitches and knit them together.



Chart



- K on RS, p on WS
- P on RS, k on WS
- duplicate stitch in contrasting colour
- m1 knitwise on RS, purlwise on WS
- m1 purlwise on RS, knitwise on WS
- ssk on RS, ssp on WS
- ssp on RS, ssk on WS