



## Polar Cap

By Tracey Marsden

**Your Blythe will look like a little snow elf in this fitted cap, which is knit in stockinette stitch and finished with a fluffy trim. The soft pastel colours are as delicate as a snowflake.**

### Materials

- 1 ball of Patons Big Baby 4ply yarn in colour 3909 (a soft mix of pink, white and mauve – it also comes in plains, variegated greens or variegated blues). The cap uses less than one 50g ball of this yarn.
- 1 ball of novelty fluffy or ‘eyelash’ yarn for trim (I used Lincraft’s Entice in pink).
- One pair of 3mm knitting needles OR SIZE TO OBTAIN GAUGE
- Tapestry needle for weaving in ends

### Gauge

My gauge is 32 sts = 4” (10cm) using 3mm needles and the Patons Big Baby yarn. Use this gauge to obtain correct size. If your gauge differs, consider using smaller or larger needles or increasing or decreasing the number of stitches initially cast on.

The yarn's officially published gauge is 28 sts and 36 rows = 4" (10cm) using 3.25mm needles. Use this as a guide when using alternative yarns.

The published gauge of the Lincraft Entice fluffy yarn is 20 stitches and 20 rows = 4" (10cm) using 3.25mm needles.

### **Skill Level**

Easy

### **Note**

The cap is knit in one piece with a back seam. The fluffy trim is worked from stitches picked up along the cap's front edge.

## **INSTRUCTIONS**

### **Body**

Leaving a long tail of about 8" (20cm) cast on 20 stitches with 3mm needles.

**Row 1 (and every odd row):** K1, p to end

**Row 2, 4, 6, 8, 10, 12:** K1, m1, k to end

**Row 14, 16, 18, 20:** K to end

**Row 22:** K1, m1, k to end

**Row 24:** K to end

**Row 26:** K1, m1, k to end

**Row 28:** K to end

**Row 30:** K1, m1, k to end

**Row 32, 34, 36, 38, 40, 42, 44, 46, 48, 50, 52, 54, 56, 58, 60, 62, 64, 66:** K to end

**Row 68:** ssk, k to end

**Row 70:** K to end

**Row 72:** ssk, k to end

**Row 74:** K to end

**Row 76:** ssk, k to end

**Row 78, 80, 82, 84:** K to end

**Row 86, 88, 90, 92, 94, 96:** ssk, k to end

**Row 97:** K1, p to end (as per odd rows)

Bind off all stitches. Weave in only the end you just finished with (ie not the tail of yarn you created during CO – you'll need that one to sew seam).

## Fluffy Trim

With WS facing, pick up stitches from the straight, long edge of your knitting (one long edge will have shaping from the increasing and decreasing we did). The k1 stitches we knitted at the start of each odd row should stand out along the edge. Pick these up with your needle. It doesn't matter how many you pick up as long as the stitches are consistently spaced apart. For my fluffy yarn I picked up all stitches as the yarns were similar weight. Start and finish as close to the edges as possible.

**Row 1:** K to end

**Row 2:** P to end

Bind off all stitches and weave in ends.

## Finishing

With right sides together, fold cap in half (at red arrows on chart) and use the tail of yarn from casting on to sew the back seam. Turn right side out and your cap is ready for wearing. There shouldn't be any need to block.

## Copyright

This design is the copyright of Tracey Marsden and is sold for personal use only. The pattern is not to be sold or given away nor are items made using this pattern to be sold or given away. However, should you wish to discuss becoming an agent to sell ready made items using this pattern, please contact Tracey at <http://www.blythetoday.etsy.com>.

## Abbreviations

BO = Bind off. Knit or purl two stitches as normal and lift the first stitch over the second. Continue in this way until all the stitches on the left hand needle have been knitted and only one stitch remains on the right hand needle. Cut thread and slip through remaining stitch.

CO = Cast on

K = Knit

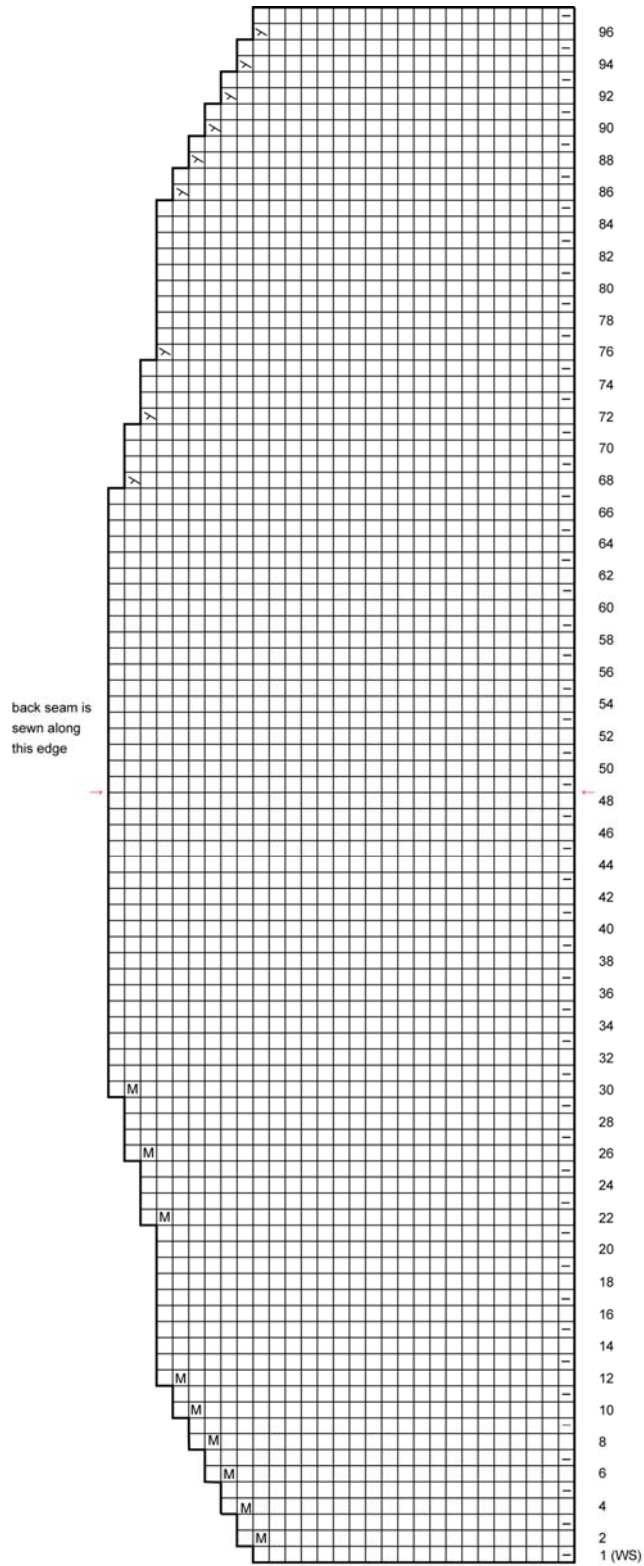
P = Purl

M1 = Make one stitch. Pick up a strand of yarn from the work inbetween the LH and RH needles (pick it up from front to back) and knit into the back of the stitch loop.

Ssk = Slip, slip, knit. Slip next two stitches knitwise, one at a time, to right hand needle. Insert left hand needle into these two stitches and knit them together.

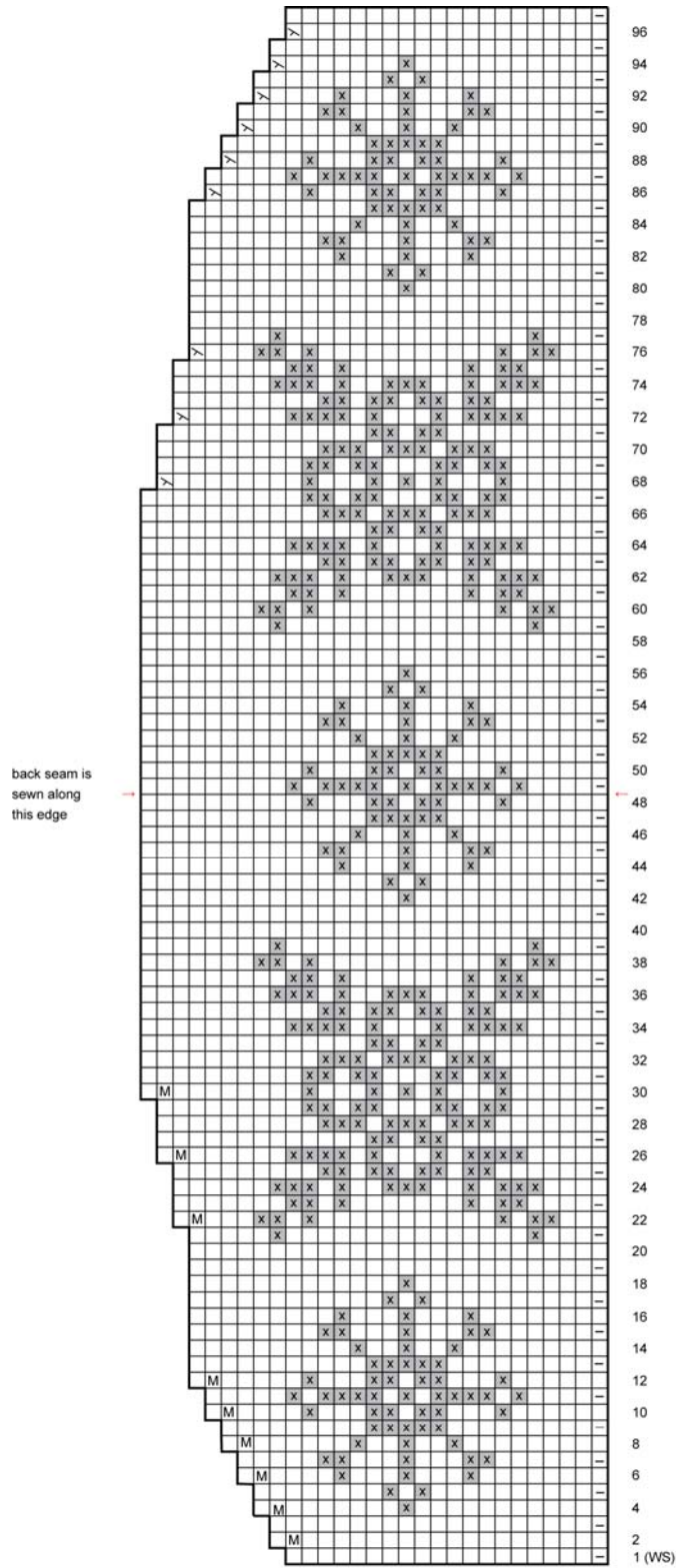


# Chart



- K on RS, p on WS
- P on RS, k on WS
- m1 knitwise on RS, purlwise on WS
- m1 purlwise on RS, knitwise on WS
- ssk on RS, ssp on WS
- ssp on RS, ssk on WS

# Snowflake variation



- K on RS, p on WS
- P on RS, k on WS
- m1 knitwise on RS, purlwise on WS
- m1 purlwise on RS, knitwise on WS
- ssk on RS, ssp on WS
- ssp on RS, ssk on WS